

Welcome to the MUMS/2000 README FILE of VERSION HISTORY

Current Versions:
MUMS: 19.01.3
MUMS*LINK: 17.1.2
CWA*LDCS: 8.20.1
BCTGM*LDCS: 18.03.0
NABET*LINK: 8.00.0
NABET*Billing: 5.30.9
Strike*Check: 10.0
NALCHQImport: 5:90:3

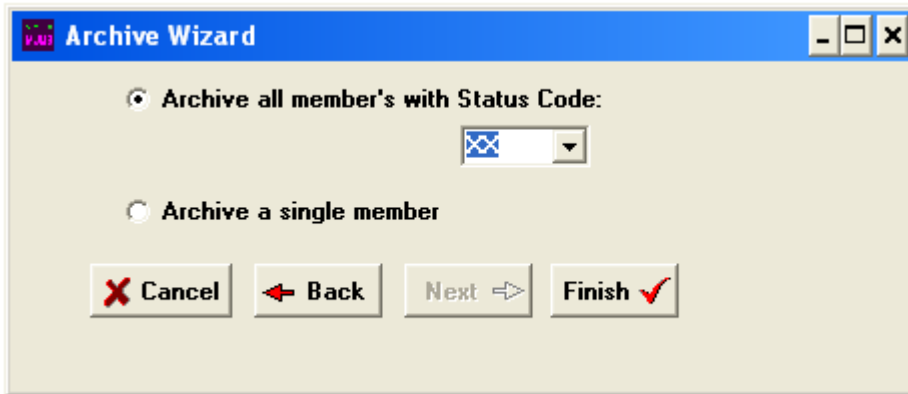
Version 19.01.3 1/10/2019

- 1.BCTGM: Enhanced HQ Transaction file to send new member information regardless if Shop has been posted.
- 2.BCTGM: Fix new Percap Validation routine.

Version 19.01 1/1/2019

1. ALL: Change "Sex" to "Gender"
2. All: New Archive File feature in Table Operations to archive members records and/or history and later restore it.

You can archive members and all their data by member status code or SSN/SIN



You can also archive history records for all members using a range of dates.



- 3. All: Improve Detail Fields tab functions on Grievance Form
 - 4. ATU: Fix calculation of age at enrollment for those born Feb 29th.
 - 5.BCTGM: New validation in Monthend processing. Program will verify Percapita Count on Coversheet to HQ Transaction File
 - 6.BCTGM: Fix error "ItemCodeTestTable" when changing quantity in transaction processing
- *****
- Version 18.10 10/15/2018
- 1. All: Change "Sex" on screen to "Gender"
 - 2. All: Improve grievance data entry to avoid having to click into Employer and Location
 - 3.BCTGM: Eliminate erroneous error message when changing qty on manual dues transaction processing
- *****
- Version 18.07 07/01/2018
- 1. ATU: Fix multiple effective date usage in reduced percap reporting
 - 2.BCTGM: Added Total Line to Coversheet
- *****
- Version 18.03 03/01/2018
- 1. ATU: Add validation that new member is over 18 years old
 - 2. All: Add option to open/print archived reports exported as .SHZ when using Reports|Custom|Edit Reports
 - 3.BCTGM: Create Shop transfer transaction if adding member to a different shop's prelist
 - 4.BCTGM: Add shop option to only put single/oldest dues owed on a prelist with "Limit to One Payment" feature.
- *****
- Version 18.01 01/01/2018 **MAJOR ENHANCEMENT**
- 1. ALL: Change Version numbering to reflect Year and Month .
 - 2. ALL: First Release of MUMS Junior which is restricted to Member Basic tab,HQ Monthend Processing & two membership reports
 - 3. All: MUMS Junior: Added Employer and Email to Basic Tab and inactivated all other tabs

Other Information

Employer EMail

Basic Other Work UnionCode Activities Notes Financial History Grievances Doc

4. All: Swapped "Sex" and "Language" to put on Basic tab instead of Other tab
5. ATU: Fixed Issue with export of status code and date on monthend transactions when multiple changes in status
6. ATU: On Coversheet, skip adding counts to lines G, H, I for prior month's deceased
7. ATU: On Pink Sheet, add employer code. On Blue sheet add Status Codes 31 & 32
8. ATU: On HQ Transactions stop defaulting to "U" for USA if no state code
9. ATU: On HQ Transactions "B" record, add Status 31 & 32
10. ATU: Remove 25 character restriction on address lines, now 32.
11. ATU: Add new "Prepare Home/Cell/Email Transactions for ATU HQ" feature under Table Operations
12. ATU: Revised Status Code table for Status 30 thru 33...

Tables: General Member Codes

Status Code	Status Description	Action Category
30	Non-Member - Working (Open Shop)	N
31	Resigned Member-Still Working	W
32	Resigned FeePayer-Still Working	W
33	Non-Member - No Longer Working	W
37	W/D ACTIVE MBR w/d CARD ISSUED	W

Status Marital Party Registration Ethnic Title Suffix Language Benefit Plans

13. ATU: Changed Coversheet to include Status 31:Resigned-Members Still Working to line 7 Members Withdrawn
14. ATU: Changed Coversheet to include Status 32:Resigned-Fee Payer Still Working to line 7 Members Withdrawn
15. ATU: Created new "EC" Employer Change flag set automatically when changing employers on active members
16. ATU: Report "EC" Employer Change on White Sheet and HQ Transactions
17. ATU: New Reduced PerCapita Processing (Controlled by switch in System Information Setup)(requires HQ coordination).
18. ATU: New Reduced or Waived amts setup under "Other Payments" in Financial Codes using Employer Code and rate and effective date like the following:

Tables: Financial Codes

Code	Description	Amount	EffectiveDate
ABC	Reduced PC	\$12.15	09/01/2016
ABC	Waived PC	\$0.00	07/01/2017
ABC	Reduced PC	\$12.15	09/01/2017
XYZ	Waived PC	\$0.00	05/01/2017

Payment Method Initiation Status Dues Formulas COPE/PAC Other Payments

19. ATU: New report of reduced percap generated when doing Monthend "Enter Adjustments" like the following:

ATU Line S Detail Report for the Month of February 2017					
<u>Employer/Unit</u>	<u>Percap Rate</u>	<u>Reduced Rate</u>	<u>= Credit</u>	<u>x Member Count</u>	<u>= Total</u>
ABC	15.40	12.15	3.25	25	81.25
XYZ	15.40	0.00	15.40	12	184.80
Credit applied to Line S on Coversheet					\$266.05

20. ATU: Automatically add the total of reduced percap to Coversheet Line S "Other Credits"

Version 10.19 09/20/2017

1. ALL: Update database encryption method and link to BCLDCS if needed. This is for Cloud MUMS

Version 10.18 04/10/2017

- 1. ATU: Validate that SSN/SIN # have proper "-" prior to monthend processing and list errors
- 2. ATU: Create two HQ transactions if transaction was PCMC (Plastic Card & Mbr Cert)
- 3. ATU: Expand message after HQ transaction file create to remind users to do the Transfer Link
- 4. ALL: In 10.18.4 Fixed the Add Missing Employer Feature

Version 10.17 02/07/2017

- 1. ATU: Validate Age@Enrollment so as not to be negative number
- 2. ATU: Eliminate empty dates of 12/30/1899 on HQ transactions
- 3. ATU: Skip Pending status during monthend if current status is not pending

Version 10.16 12/01/2016

- 1. ATU: Add Enrollment date to HQ Monthend Transactions on PINK transactions.
- 2. ATU: Fixed display of "Done" on Step#5 until really done.
- 3. ATU: Force Canada Field on HQ Transaction if address is Canadian Province

Version 10.15 9/15/2016

- 1. ATU: Skip Status 11,12,13,14,16 if in future on coversheet and closing.

Version 10.14 8/20/2016

- 1. BCTGM: Eliminate Init Fee code on Transactions to HQ on Seasonal Rehires.
- 2. ATU: Fix rerun of coversheet without new status report

Version 10.13 5/20/2016

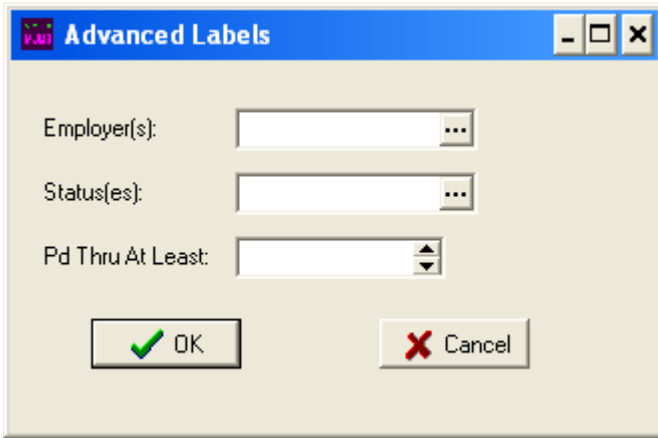
- 1. ATU: Encrypted SIN# in Monthend Step #5 for Canadian Locals. And force 4 digit local for all transactions to HQ.

Version 10.12 4/7/2016

- 1. ATU: Improve Monthend Step #5 transactions to HQ. Change in format for HQ processing.

Version 10.11 3/1/2016

1. All: New Member Labels - Advanced feature to allow select multiple employers, multiple status codes and/or since a Paid-Thru-Date. The "..." button allows you to select all, unselect all or just include the ones you want.



2.BCTGM: Added auto save as PDF for all checkoff's printing in Local Dues Collection. Saved to tables\backup folder by date and shop ID. Also fixed sorting by name on reports to include first name.
3. CWA: Upgraded MUMS*LINK to improve adds from Orion Units.

Version 10.10 2/1/2016

1. All: New "Lookup Congress" button on Member Other Tab to link to official congressperson of the member based upon zip code. This views the congresspersons full information and allows for direct communication.

Lookup Congress

2. All: Added "Closed" as an additional Grievance Status Code for those grievances closed with no explanation.

3. ATU: Initial release of new Monthend Step #5 that can prepare digital transactions to ATU HQ. This is currently in testing stage for selected locals. Other locals can click on this step and move on to Step #6 CLOSE. In the future instructions will be provided to send to ATU HQ the transaction file created by this step.



Version 10.00 9/1/2015 **** **New Version of MUMS** ****

1. All: New Version supports Windows 10 now called HT-MUMS for High-Tech MUMS
2. All: Full support for wider screens on Windows 10 when display set to 125% text & apps
3. All: New "MAP" button on member's record to view google map location of a member with street view
4. All: New validation of MUMS Backups and warns user if there is an issue.
5. All: Added "Remote Support" to MUMS Help Menu to assist in running MUMS Remote support program.

Version 8.55 6/22/2015

- 1.BCTGM: Fix issue with duplicate transactions on new adds.

Version 8.54 5/19/2015

1. All: New System Option for sort seq of Payment History. Either default of Transaction seq or new Date Seq.

Version 8.53 1/21/2015

1. All: Fix problem in Activity Report showing non-activity also
2. All: Fix problem with export of member dues history, froze member's screen.
- 3.BCTGM: Fix problem when adding new member owing back dues in BCLDCS

Version 8.52 1/6/2015

- 1.BCTGM: Fix reverse of status change to remove HQ transactions
- 2.BCTGM: Fixed problem with new automatic retire card calc on coversheet
- 3.BCTGM: Add reinstatement option of waive Init and Reinstatement Fee
- 4.BCTGM: Fixed a total column in individual payment history report

Version 8.51 11/15/2014 (**MAJOR BCTGM ENHANCEMENTS**)

1. All: Moved SSN to far right on Member's FIND grid to make it not visible when set to hide SSN.
2. All: **New Member Side button** to do individual TEXT or EMAIL to the member.
- 3.BCTGM: Changed logic to eliminate validation of Dues Code on Status change from Retired to Deceased
- 4.BCTGM: **New Individual Billing** based upon new checkbox on Financial Tab. Allows for printing of bills based upon all members marked as Individual or by Shop or single bill by name regardless of status. Copy of Bill stored on Member's record.
- 5.BCTGM: New option in Shop Setup in Local Dues Collection to print Employee # instead of SSN on Employer Billing.
- 6.BCTGM: Added Shop Sort sequence preference in BCLDCS to be used in Employer Billing Statement besides Prelist.
- 7.BCTGM: Change of Dues Amt in Local Dues Collection when using base wage code will recalculate Base Wage.
- 8.BCTGM: **New Mass Change of Status** feature to mass Outgoing on Expelled,Withdrawal,Seasonal & Incoming on Deposit or Seasonal by shop with individual Ok or Skip.
- 9.BCTGM: **New Automated Retiring/Withdrawal Letter** printed when doing a withdrawal. Also automatic charge of \$1 on monthend coversheet. Also image of letter stored on member's record.

**BAKERY, CONFECTIONERY, TOBACCO WORKERS & GRAIN MILLERS INTER
RETIRING and/or WITHDRAWAL OF MEMBERSHIP CARD** **MEM**

This Retiring/Withdrawal Card has been issued by Local Union [insert LU#], [insert c
accordance with BCTGM Constitutional Provisions to:

Member Name: [insert member name], Member SSN: [insert SSN]

Member's Employer: [insert employer name], Shop Code: [insert shop code]

Date Active Membership Ended [insert member PTD]

A Retiring/Withdrawal Card may be issued to members that have not worked or will
entire calendar month. The effective date of issue may be the last day of the month du
worked. The qualifying absence from work may be the result of retirement, layoff, sick
voluntary or involuntary termination of employment and any employer approved lea
the card ends a member's obligation to pay union dues but also ends active members'
rights that a member enjoys, (e.g. running for union office, voting in officer elections, '
proposals, etc. . .)

Financial Secretary: [insert Fin-Sec name]
Date: [insert date card generated]

**THIS CARD SHOULD B
TWO WEEKS AFTER RE**

(Please print your current address on the reverse side when depositin

- *****
Version 8.41 8/20/2014
1. All: New hide of SSN in Grievance module when system switch set.
2.BCTGM: Backup/Restore now includes option to backup the BCLDCS
databases
3.BCTGM: BCLDCS: Fix new Alternate Billing format
4.BCTGM: BCLDCS: Allow delq on prelist over 6 months
5.BCTGM: BCLDCS: New feature when adding to prelist to filter by Shop

Version 8.40 7/7/2014
1.BCTGM: Setup default for Dues History codes.
2.BCTGM: Again fixed problem with Coversheet.
3.BCTGM: 8.41 of BCLDCS added new BiMonthly Dues option and new Billing
format

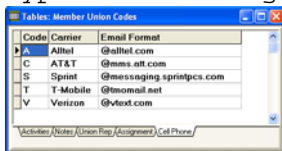
Version 8.39 6/15/2014
1.BCTGM: Fixed details of Beck Per Capita on Coversheet
2.BCTGM: Fixed problem with doing Coversheet twice in a row.
3.BCTGM: Fixed default location of BCLDCS folder. Can be modified in
INI

Version 8.38 2/15/2014

1. All: Fix the "View" of Employer & Location on Work Tab when displaying Desc instead of Code.

Version 8.37 1/15/2014

1. All: New Mass Email as Text to a Member's Cell Phone: This new feature is under Reports|Email and new Table: List|Code Table|Member Union|Cell Phone for Carrier formats. This allows you to do a mass text message to cell phones using email system provided you have the carrier type stored along with the member's cell phone number.



Code	Carrier	Email Format
A	Alltel	@alltel.com
C	AT&T	@msms.att.com
S	Sprint	@messaging.sprintpcs.com
T	T-Mobile	@tmo.com
V	Verizon	@vtext.com

2. All: Display new warning message when trying to add new record with existing SSN.
3. All: Improved the cancel of new add function to eliminate unnecessary steps.
4. CWA: Removed MLO119 when Orion-XE switch set to match other MLO's removed.
5. BCTGM: Change BCLDCS to match MUMS on restricted re-activate status choices.
6. BCTGM: Fix Path on finding BCLDCS during Monthend.
7. BCTGM: Change Status and Enrollment dates to display only & remove First Pay date on new add screen.
8. BCTGM: Remove some Validations on adding Applicant or Ext-Org new records because data not available yet.

Version 8.36 12/18/2013

1. All: Separated formats for Member and Officer labels to clear up a duplicate label problem
2. BCTGM: Fixed adding a record using applicant or external organizing status codes
3. BCTGM: Fixed a coversheet issue with Beck count/rate.
4. BCTGM: Changed BCLDCS to update member's "Individual Dues" amt automatically when changed on prelist/checkoff.
5. BCTGM: Changed BCLDCS to display full add screen when adding a former status I or Zx to a prelist.
6. BCTGM: Changed BCLDCS to allow shop sort option of "Employee #"
7. BCTGM: Fixed HQ Transactions effective 1st payment dates on new adds, reinstatements, etc.
8. BCTGM: Issue warning on manual dues if shop batch still open.
9. BCTGM: Use "Auto Exempt" switch on member's financial tab to skip this member when creating dues prelist in BCLDCS.

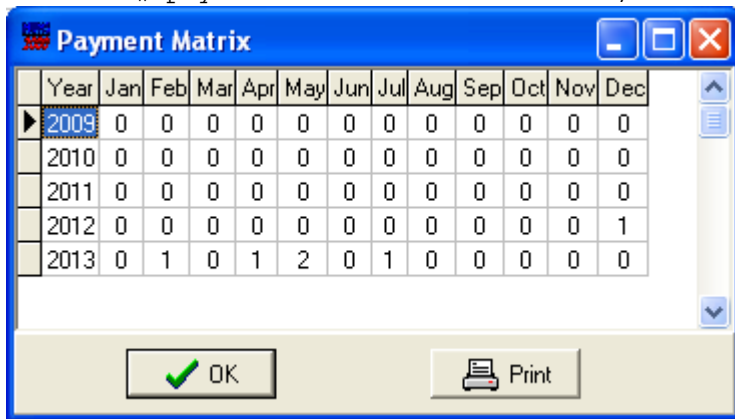
Version 8.35 11/15/2013

1. All: Payment Matrix: Calc with Negative Dues corrected and new design of print output.
2. All: Batch Post screen change to no default to force users to select option before POST is active.
3. BCTGM: Fixed update of Member Status change on New Member and change in LDCS.
4. BCTGM: Change re-active member status to use full member form in MUMS just like in LDCS & fixed Reporting & Effective Dates
5. BCTGM: Fixed the drop status and date in LDCS when a pre-filled payment record presented and zeroed out.

6.BCTGM: Change CLOSE option in Monthend to no longer default to OK and to ask a 2nd confirmation screen.
 6.BCTGM: In BCTLDCS added 2nd confirmation and no defaults when asking to Proceed and Post in Steps 3 & 4.

Version 8.34 10/30/2013

1. All: New Display/Print of Payment Matrix from Member Financial Tab to show # payments received each month, last 5 years.



2. All: Additional warnings when trying to delete a complete Member's record. Warns about existing payment history.
 3.BCTGM: Removed un-needed First Pay Date on New Member form in MUMS and Local Dues Collection.
 4.BCTGM: Local Dues Collection: Update prelist & member's record on Withdrawal, Retired and Seasonal Layoff status change.
 5.BCTGM: Local Dues Collection: Prevent status change of Withdrawal, Retired or Seasonal Layoff if also doing a payment.
 6.BCTGM: Repaired index in Transact.db for new users

Version 8.33 10/15/2013

1. All: Restored the audit trail notes on new add.
 2. All: Added new feature to select 1st, 2nd, 3rd or all email addresses on Build Email List.
 3.BCTGM: Eliminate TX40 not needed to be sent to HQ
 4. CWA: Fixed issue with Duplicate MLO117's

Version 8.32 10/1/2013

1. All: New features when System Option set to "Hide SSN Header". Now shows xxx-xx-0000 on basic tab for all users. If you have update rights you can right click on the SSN and ask to view FULL SSN and it will show for 5 seconds only.
 2. All: New option on Grievance Docs when using "Add from Folder" you now have option to create the folder.
 3. CWA: System Option "OrionXE" changed label to "Orion XE-Switch, No More MLO's" to be clearer in future to stop MLO's.
 4. CWA: Restore audit trail notes of Orion-XE switch was set on.
 5. TWU: New Union Switch and Logo for Transport Workers Union.

Version 8.31 9/5/2013

1.BCTGM: Remove unused "Dues Period" from manual dues screen
 2.BCTGM: In Manual Dues if duplicate paid-thru-date programs prompts to increment
 3.BCTGM: In Local Dues Collection: Added new totals to billing reports
 4.BCTGM: In Local Dues Collection: New Button to reset Process Control

to allow 2nd batch in same dues period.

Version 8.30 8/30/2013

1. All: Removed continuous record count under FIND and put a button for on-demand this solved a major speed and hanging issue. Count available when doing Filter Only.

2. All: Improved speed that member form opens initially.

Version 8.27 8/23/2013

1. All: Changed Batch Dues to allow for batch of COPE/PAC payments

Version 8.26 8/13/2013

1. All: Changed Batch Dues to allow for batch of Non-Dues charges

Version 8.25 8/7/2013

1.BCTGM: Fixed the reload of HQ Rates and Status Codes

2. ATU: Fixed the reload of HQ Rates and Status Codes

Version 8.24 7/20/2013

1.BCTGM: Change Coversheet and Electronic HQ File to correct percapita calcs and skip zero dues payments but not zero receipt if there was dues included.

2.BCTGM: Also fixed Local Dues Collection to prevent duplicate paid-thru-dates.

Version 8.23 7/10/2013

1. All: Re-established member lookup by Former Name

2.BCTGM: Revised Manual dues to use Paid-Thru-Date as Dues Period

3.BCTGM: Revised Manual dues to give warning if multiple payments in same Paid-Thru-Dates

4.BCTGM: Validate Init Fee Codes on new member and reinstatements

5.BCTGM: Revised Coversheet to correct calculations and improve speed.

Version 8.22 7/1/2013

1. All: Fixed speed issue on the new Filter within the FIND feature

2.BCTGM: Added Enrollment Date to saved monthend file for future HQ compares

Version 8.21 6/1/2013

1. All: New "Apply to Member Forms" on FIND button Filter option. This allows you to filter the database by your Find/Filter request so that you can navigate thru the matching members using navigation bar or even F11/F12. The number of records on the status bar reflects the size of the filtered group. If the press the "Filter" button on the member form it will un-do the filter.

2. BCTGM: Dates: Those that require 1st of Month now just ask for MM/YYYY. For example: Initiation Month, Reinstatement Month, Withdrawal Card Deposit Month.

3. BCTGM: Reporting Date now says Reporting Period and asks for MM/YYYY. Also you cannot back-date a transaction prior to current reporting period.

Version 8.20 4/10/2013 ***MAJOR ENHANCEMENTS***

1. All: New Tab on Employer Info Screen for all Union Reps with ability to print list and click on a member to jump to their member form.

2. All: New Officer Lables menu item with option to select which officer types. Use CTRL Click to select which officer titles you want.

3. All: New Officer Email Selections by Titles All Officers, All

stewards or a specific officer/steward title code. Note default of which titles are Officers and/or Stewards can be changed using List|Code Tables|Member Union then Union Rep.

4. All: New Member Filter by Employer or Status on the FIND button.
5. All: New Member sort by First Name.
6. All: New System Option to disable showing name Suffix on basic tab.
7. All: New Lookup of Grievance Documents by Grievance Number to link to a grievance. Default location is DOCS under TABLES. INI setting of "GrievDocsFolder=" can be used to redirect.
8. All: New CALC button on Financial Tab to show what dues amounts would be.
9. All: New Hot Button "CTRL I" to add a note when on Notes Tab.
10. CWA: New automatic save of last name while on a member's record when linking to Orion XE. This gives the local the ability to do a CTRL-V in the "Name" filter of Orion XE to view those members with same last name as the MUMS record.
11. CWA: New System Option "Orion XE" that when turned on will display message reminding the local to use Orion XE to update membership and will suppress MLO's questions and transactions. This should only be used when CWA HQ decides they are no longer accepting MLO's.
12. BCTGM: Revised add member form in MUMS to match the simple one in LDCS.
13. BCTGM: New button on Member form called Ref/Adj to be used for refund or adjustments. This defaults to negative amounts. These will be printed during monthend.
14. BCTGM: New ability to setup Beck rate in the BCTGM Table and have it calculate separate on Monthend Coversheet.
15. BCTGM: Name and Shop change now asks for the reporting month.
16. BCTGM: Status Change no longer does an OK if you accidentally press Enter. You must now click on the OK to accept the status change.
17. BCTGM: New Right click in LDCS on In/Re amt to select between "Initiation Fee" that reduces an outstanding balance and a "Fee" that does not effect any balances.
18. BCTGM: New automatic save of member information during Monthend Close for optional comparison to HQ data on request.

Version 8.12 2/20/2013

1. All: Changed the new Windows 8 button menu to open on left, then can be moved.
2. LDCS: New options to select posting of zero payments vs paid dates

Version 8.10 12/17/2012

1. BCTGM: Changed Total on Member's Payment History Report to include Over/Under
2. BCTGM: Changed Amt'Rcvd on Payment Detail Report to include Over/Under
2. BCTGM: Changed Manual Dues to not automatically apply Over/Under & show prior balance
3. BCTGM: Add Dues Rate effective date logic to Manual Dues Processing

Version 8.09 11/7/2012

1. All: New Mass Change Base Wage Feature
2. All: New Effective Date on Base Wage & Prior Base Wage

Version 8.08 10/1/2012

1. ALL: Restore the sort and FINd by Former Name
2. CWA: New File|Table Operations|Setup OrionXE Speedbutton for Gateway to Orion

Version 8.07 9/1/2012 NOTE: THIS UPGRADE TAKES TIME TO REFORMAT MAJOR FILES

1. ALL: Increased size of view of Political District to eliminate scroll bar
2. BCTGM:LDCS New 4 & 5 Weekly Dues Calculations
3. BCTGM:LDCS New Date Withheld on Checkoff carried forward to Payment Histoy
4. BCTGM:LDCS New Prelist/Checkoff Reports can now be printed, previewed & exported to any file type
5. BCTGM:LDCS Sort seq of member Lookup defaults to sort seq based upon shop setup
6. BCTGM:New "HQ Trans" tab on member's record to view transactions sent to HQ
7. BCTGM:New Report on status of shops when closing monthend to highlight those not posted
8. BCTGM:New Ability to completly Reverse out a prior status change made in error
9. BCTGM:LDCS Allow for installments of Init & Reinstatement fees

Version 8.05 6/19/2012

1. ATU: Added new Monthend Step 6 for future electronic transmission of data to ATU HQ.

Version 8.03 5/22/2012

1. ALL: Restrict several fields to allow pull-down codes only.
Member: Language, Sex, Ethnic
Grievance: Status, Location, Category, Step-Action

Version 8.02 5/4/2012

1. ALL: Last Name is now a mandatory field when adding a new member.

Version 8.01 4/1/2012 (For Windows XP, Windows Vista, Windows 7, and next Windows 8)
)

1. ALL: New "Button" speedbutton to active new **Menu Button Toolbar**. This can be positioned anywhere on screen and change it's shape or docked to the top/bottom or sides of the screen. This is handy when using Touch Screens or Tablet computers.
2. All: New customizable Work Tab found under File|Setup|System Information, Field Setting Tab in a new section called "Work Tab". In this section you can set any of the ten Work Tab fields to display the code or the description on the screen.
3. All: Work Tab now displays the work fields much wider to accomodate descriptions. The pull-downs continue to show both codes and descriptons for the work codes.
4. All: New HELP pointing to "View Major Enhancements"
5. All: New HELP pointing to "View Training Videos". This on-line help will be upgraded on a regular basis. Please check this often to look for new videos on MUMS features.

Version 5.93 1/15/2012

1. All: New Option Reports|Build Email List with flexible filters and outputs
2. All: Auto Delete of Batch Header when deleting a batch of dues.

```

*****
Version 5.92  11/17/2011
1.  NABET:  Issue Warning on Employer if set to 5000001 and doing an IN-
REPORT
*****
Version 5.91  10/1/2011
1.  BCTGM:  Remove Senting Init info to HQ on Seasonal Rehires
*****
Version 5.90  5/4//2011
1.  All:    Restore Index by Former Name that got lost previously
*****
Version 5.89  4/22/2011
1.  BCTGM:  Change New Members Enrollment dates to use 1st of month
2.  BCTGM:  Add ability to change Paid Thru Date while changing Status
from W or S to active
3.  BCTGM:  Change initial Paid Thru Date to be end or prior month based
upon INIT Date
4.  All:    Rewrote Activity Report to allow for more entries to be
searched
*****
Version 5.88  4/3/2011
1.  BCTGM:  Fix PerCap count on Coversheet for new adds
2.  BCTGM:  New Monthend exception report to validate HQ transactions
*****
Version 5.87  3/18/2011
1.  BCTGM:  Added Full Name to Edit/View Transactions to help make
corrections
2.  BCTGM:  Added HQ Member Id to all records, use File |Table
Operations|Update BCTGM ID for initial setup
3.  BCTGM:  Fixed format of several HQ Transactions
4.  All:    Fixed problem with post/delete dues batch when many unposted
are listed
*****
Version 5.86  1/20/2011
1.  All:    Fix security issue if Preload member form set & login fails
2.  BCTGM:  Fix HQ Transaction for multiple per capita payments within a
calendar month
3.  BCTGM:  Fix HQ Transaction dates for Reinstatement and Withdrawals
4.  BCTGM:  Remove special characters from HQ Transaction member
addresses
5.  BCTGM:  New Reinstatement options with & without initiation fees.
6.  NABET:  Added Warning on missing Employer when doing IN report
*****
Version 5.85  12/15/2010
1.  All:    Changed sort sequence for Batch Payment Detail & Deposit
Reports to match Auto-Create Sequence
2.  BCTGM:  Fixed HQ Transaction formats for Canadian Locals
3.  BCTGM:  Change Paid-Thru-Date on new members to end or prior report
month instead of current month
*****
Version 5.84  12/1/2010
1.  All:    Fixed Scroll Up/Down on Dues Quantity on Dues Processing Form
2.  All:    Added sort option for Deposit/Payment Report
3.  BCTGM:  Added Status Change option Deposit Card for existing P, R, W,
I status
4.  BCTGM:  Added ability to edit monthend transactions to fix reporting
period
*****
Version 5.83  11/20/2010
1.  All:    Fixed Issue with Suppress Detail holding from Custom to

```

Standard Reports

2. BCTGM:Fixed Problem with Create Monthend Transaction File

Version 5.82 11/15/2010

1. All: Increased size of Mass Change & Transaction Processing Screens
2. BCTGM:Corrected issue with reporting address change on Monthend reports

Version 5.81 11/5/2010

1. BCTGM: New Feature to allow status changes to be put into prior reporting month
2. BCTGM: MUMS Revision Number now printed on Coversheet to assist in Support
3. BCTGM: Fixed problem with multiple dues in same reporting period vs percap payments

Version 5.80 10/31/2010

1. All: New feature in Reports | Letters | Political Action to Select on Party Code or Registration Code
2. All: New feature in Create a Batch to include delinquent dues with "Bring to Current"
3. CWA: New Option in LDCS to print only 4 digits of SSN. Also name sort now matches MUMS name sorts
4. BCTGM:New feature to reload BCTGM PerCapita Rates and BCTGM Status codes under Table Operations
5. ATU: New feature to reload ATU Rate Table and Status Tables under Table Operations

Version 5.78 10/1/2010

1. All: Change Auto Create Batch seq to match Setup Master Sequence
2. All: Standard Reports of Member List, Roster & Labels has new Filter by Employer
3. All: Fix Access Violation Error after chg of custom report then doing standard report

Version 5.77 9/15/2010

1. All: Fix Batch Dues Reports to show century and longer names
2. All: Revised Auto Create Batch with new options on update Paid-Thru-Dates
3. All: New ability in Auto Create Batch to include prior delq payments
4. All: Increased the display of Benefit Plan Descriptions
5. All: Add Employer to Report Setting Filter for Member List, Roster, Labels
6. All: Clarify Paid Thru as 01 for all but BCTGM which will be end of month
7. CWA: New System Info Option to suppress Phone & Email Address on MLO's
8. BCTGM: Added New Status of Non-Members, Applicants, Organizing, Courtesy
9. BCTGM: Split monthend status report to show those with and without transactions
10. BCTGM: Implement License Renewal feature

Version 5.76 7/15/2010

1. BCTGM: Initial Version for BCTGM with Status Changes and all Monthend Functions

Version 5.74 6/07/2010

1. All: New feature to display member's photos stored in folder PHOTOS under TABLES. New System Option for saved by SSN or EmployeeID with new button to display on Member's form. PHOTOS Directory present creates Photo Button, presence of photo for member, activates the button. BMP, JPG, TGA currently supported

2. ATU: Highlight Period Date in Red during Status Change.

Version 5.73 3/15/2010

1. All: New Activity Reporting Selections by Non-Attendance & Range Zip Codes

2. All: Fix Cut/Paste Speed Buttons

Version 5.70 10/09/2009

1. CWA: Change MLO reports to verify dates and not report bad dates.

2. CWA: Change LDCS to insert any missing Member-ID's

Version 5.69 8/16/2009

1. CWA: Change MLO Reports to check for any missing Member-ID's first and if found to reference menu item to fix.

2. CWA: Fixed MLO117 to correctly output local number in TXT file

3. CWA: Changed LDCS (Ver 5.75) to allow separate Fixed Rates for each IUE PU

Version 5.68 7/8/2009

1. CWA: Added new Union Rep Codes to default set to match CWA HQ local officer codes

2. All: New feature under Batch Processing to delete the whole batch

Version 5.67 5/15/2009

1. All: New Feature to see what other users still have MUMS open. It is under File|Setup|Check MUMS Users

2. All: New Hide SSN feature. When Hide SSN Headers on File|Setup is set, new feature still removes SSN for member headers but now also hides the SSN from inside Basic tab after 5 seconds if inactivity on the screen.

3. All: New feature to delete Batch of Dues that has not be processed. This is down under Dues|Batch Processing, there is now a Delete Button.

4. CWA: Fix problem when changing first dues date on MLO117, it now validates that you can only enter month/year.

5. CWA: Fix outputs of MLO's to only show ID and no SSN on report and data going to HQ.

Version 5.66 4/15/2009

1. ALL: Fix problem with refresh of Report Writer File structures

Version 5.65 3/15/2009

1. All: Fixed option to select "," vs ";" in email output

2. All: Fixed problem with update tables feature

Version 5.63 3/1/2009

1. ALL: Changed Status Code file in Samples to be generic set and not ATU

2. CWA: Add Local Number to Email of LDCS data

Version 5.62 2/1/2009

1. CWA: Change File Name on Exporting MLO117 via email to HQ

2. CWA: New email output for MLO169

Version 5.61 1/15/2009

1. All: New feature to change upper/lower case under File|Table Operations|Change Case of Field Data. This can reset whole file to Mixed Upper/Lower or set to Upper only.
2. All: New feature to merge two sets of tables under File|Table Operations|Merge Tables
3. CWA: New feature in Ver 5.68 MUMS*LDCS to email remittances under File|System Options.
4. CWA: Fix MLO169 report to reflect a change in Member ID.

Version 5.60 10/15/2008

1. CWA: New feature export Local Officers for On-Line MLO109 Updates: File is C:\MT2000\MUMSOFFICERS.txt
[File|Table Operations|Export Local Officers](#)
2. CWA: Fixed NABET IN/OUT/CHG data to reflect Member-ID instead of SSN.
3. ALL: New ENVELOPE option when doing single label from Member Basic Tab. See Printer Setup for "Envelope"

Version 5.56 9/1/2008

1. ALL: Add new option to merge two member records together that are really the same person.
[File|Table Operations|Merge Member Records](#)
2. ALL: Area, Section, Shift on Work Tab of Member to display description instead of code.
3. CWA: Change all outputs to use MemberID instead of SSN on MLO's
4. CWA: Add email output option to MUMS*LINK remittance files

Version 5.50 6/1/2008

1. ALL: Remove SSN from Header on Member Form for security, via File|Setup|System Info "Hide SSN Header"
2. All: New feature for putting path of TABLES & REPORTS as part of properties of ICON for mutliple users wanting separate databases:

- [The command line parameters works as follows:](#)
- [The TableDir and ReportsDir require separate parameters. You can specify one or both. If the either parameter is used and the pathname does not exist, the program will give an error message, and the ini file values will be used.](#)
- [The parameters need to be of the format:](#)
[TableDir=MyTableDirPathName ReportsDir=MyReportsDirPathName](#) If both parameters are used they need to be separated by a space. If the pathname includes a space, the entire pathname must be quoted.
- [Examples :](#)

[c:\mt2000\mt2000.exe TABLEDIR=c:\mt2000\TABLES REPORTSDIR=c:\mt2000\REPORTS](#)

[c:\mt2000\mt2000.exe TABLEDIR="c:\mt2000\MY TABLES" REPORTSDIR="c:](#)

\mt2000\MY REPORTS"

3. CWA: Changed Full set of MLO119 to report only active members
4. NABET: Any change of Employer will put member on NABET-IN report
5. ATU: Change White Sheet to report former Name & SSN only once

Version 5.35 3/6/2008

1. CWA: Revised MLO117 & MLO117B formats

Version 5.34 1/22/2008

1. All: Corrected validation of Canadian Province codes
2. All: Corrected problem if Regional Settings set to French/Canada
3. CWA: New MLO117 & MLO 117B forms and email option
4. CWA: Correct problem with email of MLO attachments

Version 5.33 12/1/2007

1. All: Fixed Problem display of Dues codes on Member Financial Tab
2. All: Improved installer to work with Windows Vista
3. All: Ability to change Tables & Samples using Windows Vista
4. All: New Email Output Options for Desktop client, Server or Internal
 - The desktop method is for people who want to use their e-mail program, need to have a record of what was sent, and/or need their address book/contact list.
 - The internal client is for people that use web e-mail and have no desktop client.
 - The server method is for terminal servers or other situations where you do not want to send from your workstation or you are sending large numbers of e-mails.

Version 5.32 5/25/2007

1. All: Added new Search/Sort Criteria using FIND button for Former Last Name
2. CWA: Add Stew/Mobl to MLO119 even if just address change
3. CWA: Change MLO Printing OK question to assist user in Print & Email prior to "done"
4. ATU: Restrict street address to 25 characters to match HQ.
5. ATU: New Custom Report "AddressLengthQuery.srw" to locate too long addresses.
6. ATU: Add Status 52 - Military Leave to Blue and Coversheet Reports

Version 5.31 4/15/2007

1. All: Improved ability to delete/clear Job Classifications on Member's "Work" Tab
2. All: Added new Former Name field to "Other" Tab on a member's record.
3. All: Search Grievance Categories 1 & 2 when doing Research Report
4. NABET: Fix "Daily Rate" & "Calculate" on Financial Tab.
5. NABET: Fix presentation of Financial and Billing Tabs.

Version 5.30 1/1/2007

1. All: New space for three email addresses each with optional address type
2. All: Redesigned the Union Code Tab on Member to display new fields

better

3. All: New ability to indicate cell phone carrier next to cell phone number
4. All: New custom reports for Roster Statistics by Congress, State Upper & Lower
5. CWA: New layout for MLO119 to include 3 phone numbers and 3 emails
6. CWA: New email output option for MLO119 with Auto Email Switch in Setup
7. CWA: New generate of MLO119 when change of Address, Phone or Emails. Or full Set
8. CWA: CWA On-Web Course Slides, now included under Help | Manuals
9. CWA: New Select and create emails feature under Reports | Build Email List

Version 5.28 10/05/2006

1. ALL: Fixed Report writer to open in PREVIEW mode and not RECORDS mode
2. ALL: Fixed error when doing custom letters when there was no prior letter formats saved
3. ALL: Increased block size for PAYMENT database to allow for more history
4. NABET:Reminder Warning to enter Employer if adding a new member
5. NABET:Revised Daily Hire screen and new Billings Screen
6. NABET:Revised Financial Screen with balances due by category
7. NABET:Revised Stmt button to show image of previously printed billing statements
8. NALC: Add NALC Logo to screen
9. ATU: Add new July 2006 \$10.10 PerCapita Rate
10. CWA: MLO119 form now includes reporting Home,Work,Cell Phone and email address.

Version 5.27 5/8/2006

1. ALL: New feature in installer to load misc programs at time MUMS is loaded.
2. ALL: Fixed error in database called Fields2 during upgrades
3. ALL: Fixed error in Dues Period if left blank during "Create a Batch"
4. NABET:Fixed error in validate new add that avoided NABET*XREF if you post record prior to enter last name.

Version 5.26 4/28/2006

1. ALL: Added new feature under HELP called "View Manuals" to show PDF versions of MUMS Manuals and other helpful documents. These can be viewed and printed and even search for key words and phrases.
2. NABET: New "Addon" Program Nabet*Billing with Menu but no functions yet

Version 5.25 4/14/2006

1. NABET: Fix NABET IN/OUT Report file names (they were missing local number sometimes)

Version 5.24 4/10/2006

1. ALL: Enhance ability to have long file name & path for attached documents
2. ALL: Fix changing of member form size when screen was minimized.
3. ALL: Allow to change dates on Union Rep and Union Assignment

records

4. ALL: Expanded date field on the Deposit and Payment reports.
5. NABET: New options on selecting Nabet In/Out Reports all, specific period, range of dates.
6. NABET: New option to setup manual emails instead of automatic if non-standard.

Version 5.23 2/15/2006

1. NABET: Email PDF and TXT of NABET In/Out reports and MLO 169's
2. ATU: SSN change now reported
3. ATU: Fee Payer option added for new records.
4. ALL: Fixed missing WSIZIP.exe program needed for Backup/Restore Feature

Version 5.21 1/15/2006

1. NABET: Initial Xref file to lookup new SSN in other locals.
2. All: Fix Missing HealthPlan.db problem

Version 5.20 12/1/2005

1. ATU: Fix Initial Value Calculations and creation of monthend.db needed for reports
2. ATU: New Monthend Cover Sheet
3. ATU: Automatically Change Status Code if Pension and over 50 years old
4. ALL: New Quick Entry & Standard Reports for Activities & Notes
5. All: New Member Label Features with Zip counts
6. ALL: New Standard Reports by Birthdate, Seniority Date
7. ALL: New Report writer with expanded Filter and Preview Features
8. All: New Report Writer Runtime Input Filter Feature
9. All: New Optional 3rd Address line and country code table
10. All: Change in display of Group, Title, Class to show descriptions instead of codes
11. All: New Foreign Address Support
12. All: New function to create temp files for Political Action, Union Assign or Union Reps
13. All: Fix custom letter writing to expand file names and search criteria

Version 5.15 8/2/2005

1. New Backup & Restore Feature
2. Fixed upgrade to new version of tables.

Version 5.13 5/31/2005

1. ATU: All HQ Transmittals except coversheet. Yellow, White, Pink, Green & Blue
2. ATU: Add new feature for Action Category when changing Status Code
3. ATU: New Custom Fields on Basic Tab

Version 5.06 3/21/2005

1. ATU Status Change dialog.

Version 5.05 3/14/2005

1. ATU month-end report screen, new reports, new dropdown box for RC/NC field, automatic entry of NC when name changed.

Version 5.02 2/8/2005

1. Report Writer upgraded. The Shazam Report Writer, which is the interface available to make custom reports, has been improved to allow users more flexibility in designing and executing reports. Some of the new advanced features include making special "join" relationships between tables, having the report prompt you for input before it is run, and increasing the filtering options. Previously-created Reports will be opened in the new report writer (backwardly compatible). Certain custom-expression fields may need to be edited.

Version 5.00 12/29/04

1. Quick entry of activities and notes for multiple members.
2. New note and activity reports.
3. Country code option.
4. Third member address line, cell phone field.

Version 4.76

1. Display group, title, and class full description on member work tab instead of code. Pull-down table still shows description and code.
2. Under File menu, option to do full Screen Print or just print open form.

Version 4.71 produced

1. Custom Referral Enhancements made for Steamfitters
2. Ability to create temporary tables which summarize political action, union assignments, and union representative information for each member. These tables can be used in reports to display member information more easily.

Version 4.68 produced
For IATSE locals and Steamfitters, Member archive gave an error if the group or title field in a record was more than 6 chars.

Version 4.67 produced 03/12/2003
1. For CWA locals, added rt-click menu on Member/Union tab to generate MLO 109 transaction manually.

Version 4.66 produced 01/24/2003
1. Added category field to GrievNames.db, with lookup combo in code table giving 4 choices of 2-letter codes.
2. Changed dropdowns on grievance form to filter appropriate category or uncategorized records.

Version 4.64 produced 11/27/2002

1. Added feature for CWA Member ID.
2. Changed how we look for the calculator for newer versions of Windows.
3. Locked down Job Dispatch by adding new table JRAudit and tracking changes to status, terminations, and dispatches.

Version 4.60 produced 8/12/2002

1. Fix errors in Quick Report and Filter.

Version 4.58 produced 7/5/2002

1. Correct and Update processing - Fixed error with dBase files and the problem table. Added option when updating to keep a table of changed records.

Version 4.56 produced 1/25/2002

1. Corrected update problem in 4.55.
2. NABET statements: Display begins on latest statement.

Version 4.55 produced 1/9/2002

1. NABET statements : Is now read only. Printing bug is fixed.
2. If sound and video are on, and files are missing, program now recovers more gracefully from this error.

Version 4.54 produced 12/17/2001

1. Corrected problem in Member form work tab where list of locations for location field was incorrect in some situations.
2. NABET daily hire tab is now read-only.

Version 4.53 produced 12/10/2001

1. Added option in Batch Deductions to omit changes to paid-thru dates. This is intended for situations where multiple dues payments are received in a given month.

Version 4.52 produced 12/7/2001

- 1) NABET Daily Hire Tab
- 2) NABET Statement Review
- 3) Increased limit for document file names to 255 characters
- 4) Fixed problem with viewing work location information (from member or employer form) when two employers had a location with the same code.

Version 4.48 produced 6/18/2001

- 1) CWA MLO printing - System information option to use alternate forms.

Version 4.47 produced 6/11/2001

- 1) CWA MLO printing fix for date filter and automatic use of custom MLO Forms.

Version 4.46 produced 5/25/2001

- 1) Misc. Job referral fixes.

Version 4.45 produced 4/13/2001

- 1) Fixed error on some new machines when Member form set to automatically preload.
- 2) Added union switch for IATSE for special job referral activities

Version 4.44 produced 4/5/2001

- 1) Changed installer to better detect type of update needed.
- 2) Fixed errors in File/Import From Text File and File/Export To Text File.
- 3) Fixed error in standard receipt format.
- 4) Fixed error where certain printouts (receipts, grievance form, and MLO reports) did not go to correct printer.

Version 4.43 produced 3/20/2001

- 1) Fixed error in updating tables where space needed or space available was larger than 3 GB.

Version 4.42 produced 3/7/2001

- 1) Fixed Document Tab in Grievance, Member, Employer. Double click on blank record was displaying Explorer Window. Adding documents was not working correctly.
- 2) Spare fields were not showing up on the member form.

Version 4.41 produced 2/16/2001

- 1) Fixed display size default for member form.

Version 4.40 produced 2/6/2001

- 1) Features for NABET unions

Version 4.39 produced 12/15/2000

Misc features for Steamfitters

Version 4.38 produced 12/1/2000

- 1) Member assignment list now has wider field for work phone.
- 2) Member form had missing SSN mask to add dashes.
- 3) Quick Reports gave an error in certain situations when the field list was displayed.

Version 4.36 produced 10/3/2000

- 1) Mass Change program has new features to copy a value and move a value between fields.

Version 4.30 produced 12/7/1999
32-bit Delphi 4

- 1) Fixed Copy/Cut/Paste Buttons and menu items.
- 2) New Mass Change option to copy or move the contents of one field to another.
- 3) Group, Title, and Class fields on Member Work tab and Code Tables now can hold 10 characters.
- 4) Entry and change of Database Password on Password Tables form now has more stringent confirmation procedure.
- 5) New zip code grouping reports.
- 6) ReportSmith is no longer supported.

For CWA Locals only:

- 1) MLO 109 -- Fixed problem with new E-mail address. Choosing "Local Address" uses the local's address for the member and reports to headquarters. Transactions for deleted codes now show correct name and info on the screen.
- 2) MLO 109 and 119 -- Creation of these transactions for specific Union Rep codes can now be controlled by the user. In Code Tables/Union/Rep Codes, there are now checkboxes to mark for each rep code to indicate if field changes and code changes should be reported.
- 3) MLO 117 -- Changed page numbering to reset at each employer.
- 4) One-Copy MLO forms now have no distribution listed.

5) New fields in System Information, Organization tab, for MLO Officer and Title. These fields are printed on appropriate blanks for all MLO forms.

Version 4.25 produced 8/24/1999

1) Requests in Job Referral get messed up if the user changes employer codes.

Fixed so that employer code changes get propagated. Warning if employer code is missing on request.

2) Fixed several problems in the Member form where the information at the top did not refresh correctly.

3) New feature under File/Table Operations for Employer Table Update. If Member records have been added from outside sources, this program will add any new employers and locations to the Employer and Location tables.

4) New System Information choice under Program Settings/Program Features to set default sort/find order in member file.

5) Financial History Report calendar colors changed for easier reading.

6) Error message changed when entering duplicate SSN numbers for new records in the member file.

7) Bug fixed in the Member form where in certain circumstances the program asked about deleting political action information when the record had been edited, as the tab was changed.

8) Cut/Copy/Paste buttons did not always work.

9) Grievance participant SSN's now change when member SSN is changed.

10) Note on Dates: If a two-digit year is entered, the program will assume that the century is the current century according to the clock on the workstation. This is different than the "pivot" method used in some programs. Until the year 2000, enter dates after 2000 by typing in four digit years. Years are stored correctly even if only two digits are displayed. The display of dates can be set on each workstation in Control Panel/Regional Settings/Date.

For CWA Locals only:

1) MLO 169 had error if more than 15 changes for one employer. State field was not wide enough.

2) MLO 117 now has no Member Code on Employer and Employer Return copies. State field is wider.

3) New MLO 117b for Agency Fee Payers.

4) MLO 109 now tracks EMail addresses. Bugs fixed where officer is new and when officer is dropped.

5) New MLO setting in System Information on Program Settings/Other Options that allows for printing Local copy only of each form.

6) New person in MLO was generating a form 169 in erro.

Version 4.24

Version 4.23 produced 5/11

1) Payment report bugs fixed (called from member history screen, main menu.

Version 4.22 produced 5/9

1) Added reporting feature for Quarterly financial statements. Looks and

works very similar to Member Payment history, just with the date ranges done for you.

2) Modified Job Dispatch Employment history to record the employer and location. This will prevent users from "losing" job histories if they delete the original request.

The system used to derive Employer and Job information from the request record.

3) Modified Deletion of Member record to delete any references of this member

on a Job Dispatch list. Prior to this, if a member was deleted, the List record would remain with a blank name. User is warned.

4) Added transaction details to the History screen which is accessed from the cash receipts form. Now it matches the History screen on member form.

5) Warn members if they are attempt to create a transaction for a member who already

has a pending (unposted) transaction. User is given choice to edit existing or to create a new transaction.

6) Ask user to confirm they want to post batches before continuing. This is to avoid posting batches by accident.

7) Updated Payments summary report to report only on the batches selected, it was showing all batches regardless of selection.

8) Display "Hot" note for members when a New transaction is created for them.

9) Eliminated blank lines from label reports.

10) Fixed bug in Cash Receipts when a Dues-related code is chosen and it updates

the paid thru date (correctly). If the user then changes this dues-related

code to a non-dues-related code, the paid-thru date was not readjusting back

to what it should be.

11) Added Employer/Employee report to Reports menu under Employer Reports.

12) Fixed bug in Payment summary report to select correct date range.

13) Added option to change member records employer field if the employer code is being changed.

Version 4.19 produced 3/18/1999

Changes include:

- 1) One table change (member) to add EMail Field.
- 2) Fixed recursion on adding dues.
- 3) Fixed slow add for new member.
- 4) Member insert forces post after leaving SSN field.
- 5) Change Member Label format.
- 6) Added data surgery option for super-users. Must login as UFSI or WSI and the option appears under table operations as EDIT TABLES.
- 7) Force deletion of any existing paybatch and payitem records, user is given warning.
- 8) Added default codes option back to the update form. It now works.

Version 4.18 produced 2/17/1999

Changes include:

- 1) One table change (Job Class) to allow blank entries.
- 2) Fixed Dues Balance calculation error.
- 3) Fixed Report Form size problems.

Version 4.17 produced 2/4/1999

Changes include:

- 1) New update procedure, resolves file access problems with net dir, no longer writes over backup data if done twice in a row. Allows user to update individual tables or a group of tables at any time as an alternative method for fixing corrupt data.
- 2) Fixed Subtotaling errors on Deductions form.